

Make the most of your valve

Intelligent Control Valve Positioner SRD998



Robust and reliable design

- Savings in maintenance and spares with innovative modular design
- Reduced accidental damage during commissioning with a single user dedicated compartment for cabling and configuration
- Increased lifetime thanks to a 2-stage filtering system and overpressure protection of the internal I/P

User friendly interface

- Fast commissioning with one “Turn and Push” rotary selector and intuitive menu
- Increased comfort of use with large full text display and easy language selection
- Reduced installation and shutdown time thanks to online troubleshooting with local help files

Widest application coverage

- Designed to be mounted to control any valve in any application
- Inventory and installation cost reduced with integrated high air flow capacity versions (up to Cv 0.85)
- Seamless DCS Integration

Introduction

Schneider Electric is pleased to announce the release of the new control valve positioner, SRD998. EcoStruxure™ Process Instrumentation's valve positioner offers the widest range to complement any application in any industry.

Schneider Electric's instruments offer technology and expertise powered by Innovation At Every Level to allow asset optimization for our customers with predictive and proactive maintenance. Improve operational efficiency, reliability and control costs in a safe and secure manner.

Designed to protect

With a single user-dedicated compartment for cabling and configuration, the pneumatic and electronic parts remain isolated to avoid accidental damage.

Fast commissioning

With a “Turn and Push” selector and intuitive menu, this positioner provides fast, local configuration and easy troubleshooting.

Full Valve Compatibility

Proven in use with direct mechanical linkage, the new SRD998 is supplied with the largest range of mounting kits without size or model restriction to support any revamps.

Widest application coverage

High pressure application

Input air supply pressure up to 10 bar (145 psi) high output pressure allows the positioner to work at a higher torque on the actuator and valve; therefore, smaller actuator sizes can be used.

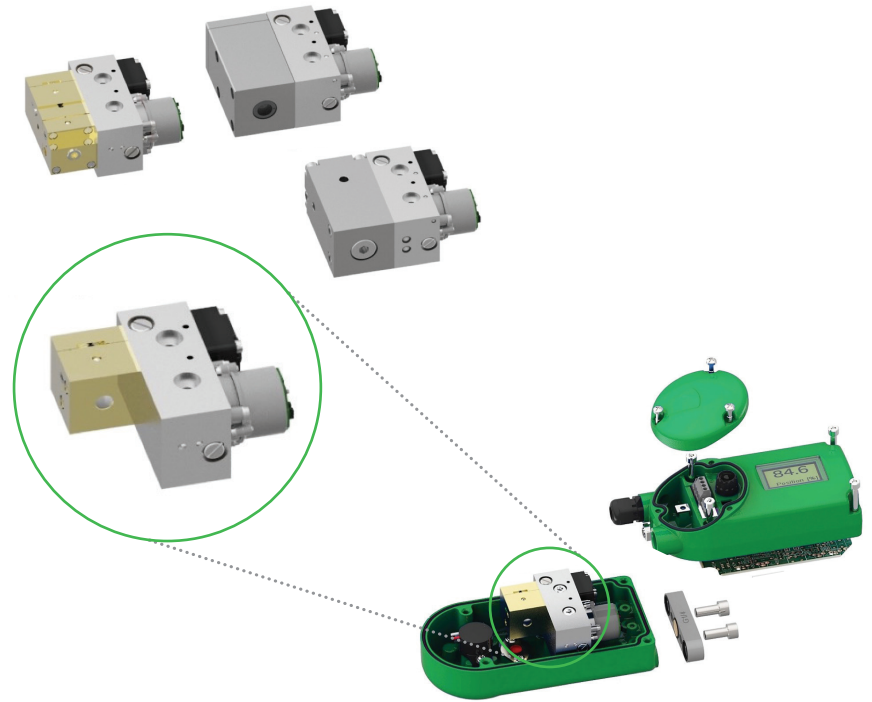
Modular airflow capacity

Selectable pneumatic amplifier airflow and type, to “best fit” any application available (Cv 0.85): single or double acting, standard or high airflow, diaphragm amplifier or spool valve.

Up to 52 Nm³/h @6 bars airflow capacity available (Cv 0.85).

Sustainability

Sustainability of the new SRD998 is achieved thanks to the increased life-time and an innovative modular design enabling the engineer to simply and easily change the defective part.



SRD998 Pneumatic	Standard Performance	High Performance	Very High Performance
Type	Single acting B0S Double acting C0S	Single acting B1S, B2S Double acting C1S	Double acting C3S
Max. Supply Pressure	6 bars (~6 bars output)	10 bars (~10 bars output)	10 bars (~10 bars output)
Flow Capacity	Standard Flow rate Cv 0.2	up to Cv 0.5	Cv 0.85
Air Consumption/Air Output Ratio	Standard Ratio	Better Ratio	Lowest Ratio
SRD998 Diagnostic Tiers			
Advanced Diagnostic	✓	✓	✓
Basic Diagnostic	✓		

Intelligent Control Valve Positioner SRD998

Modular Pneumatic Performance

The new SRD998 offers a larger choice of pneumatic performance including high flow versions and up to 10 bars air supply and output pressure is available.

High output pressure allows the positioner to work at a higher torque on the actuator and valve; therefore, smaller actuator sizes can be used.

Very high flow capacity versions allow you to realize savings since small volume boosters are not necessary.

Save installation costs with the new very high flow C3S pneumatic available in the SRD998.

It can deliver up to 52 Nm³/h @6 bars supply pressure (Cv 0.85) and can be used up to 10 bars maximum input pressure.

Save the use of small volume boosters.

SRD998 with Basic Diagnostics

Full interoperability and seamless integration into DCS

Communication Protocol
HART 7

- Continuous diagnostic status monitoring
- Long 32-character tag for seamless reference to applications in the plant

Basic Diagnostics

Auto diagnostics with local alert pictograms according to NAMUR NE107: (Good, Maintenance, Alarm, or Out of Specifications).

Easy access to local Help file for troubleshooting through the rotary selector. Configuration is also possible anytime using a local HIM or via the DTM.



84.6

Position [%]

Potentiometer
outside
calibrated
range

SRD998 with Advanced Diagnostics

Full interoperability and integration into DCS for improved Process Performance, Online Diagnostics for predictive and proactive maintenance

Communication Protocol
HART 7

- Continuous diagnostic status monitoring
- Long 32-character tag for seamless reference to applications in the plant

Advanced Diagnostics

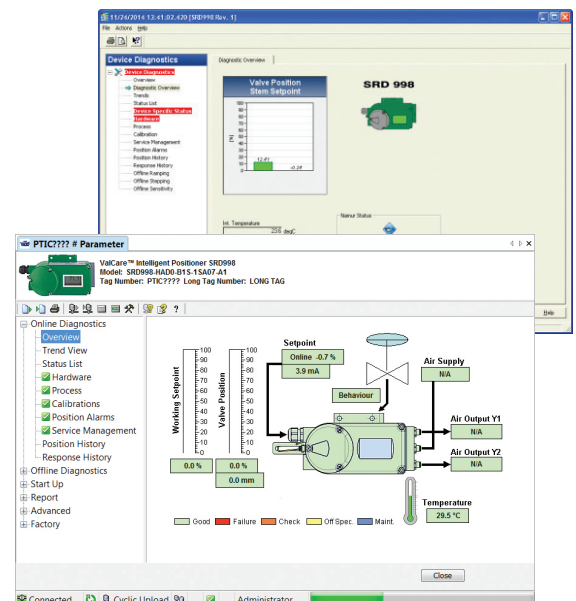
Best-in-Class DTM (Device Type Manager)

Online monitoring of key parameters allows the adapted maintenance on the right valve assembly.

Advanced Diagnostic with SRD998 will support the planning effort for maintenance since several control valves parameters can be monitored online for predictive and proactive maintenance.

Comprehensive graphical data for Proactive and Predictive Valve maintenance (EDD for Host using EDD Technology).

Enhanced EDD



DTM

SRD998	Specifications
Input Signal Range Communication	4-20mA HART 7
Diagnostics Performance	Advanced Diagnostics: Auto diagnostics, Step Response Analysis, Position and Response Histograms Basic Diagnostic: Auto Diagnostics
Pneumatic Performance Air Pressure Supply Air Flow	Supply air pressure...1.4-10 bar (20-145 psig) Choice between several pneumatics modules: Single acting – Standard Flow: 14 Nm ³ /h @6 bars (500 scfh) Double acting – Standard Flow: 10 Nm ³ /h @6 bars (350 scfh) Single acting – High Flow: 42 Nm ³ /h @6 bars (1470 scfh) Double acting – Very High Flow: 52 Nm ³ /h @6 bars (1820 scfh)
Mechanical Performance Mounting Materials Ambient Temperature Protection Class	One device for linear and rotary mounting Mounting onto any valve Housing and cover: Aluminum (Alloy No. 230) Powder coated Operation... –40 ... 85°C (–40 ... 185°F) IP 66/Type 4X
Electrical Classification	Intrinsically Safe according to ATEX/IEC Ex II 2 G Ex ia IIC T4/T6 INMETRO, NEPSI, FM (*), EAC, PESO, KOSHA (*) available
Human Machine Interface LCD Display Language Selection Rotary Selector	Embedded language...EN, DE, FR, ES, PT, PL, IT, TU, SW, CN, RU, KO, “Turn and Push” rotary selector for configuration, diagnostics messages
Troubleshooting	Auto diagnostics with local alert pictograms according to NAMUR NE107: Good, Maintenance, Alarm, Out of Specifications Easy access to local Help file for troubleshooting Best-in-Class DTM (Device Type Manager) Comprehensive graphical data for proactive and predictive valve maintenance
Host Interface	Certified DTM for use into any FDT frame on a standalone PC or into a DCS EDD for HOST using EDD technology EDD for Handheld terminal
Spare Parts	Modular spare parts for easy maintenance and service
Accessories	Complete range of accessories <ul style="list-style-type: none"> • Fully compatible gauge manifolds • Remote mounting unit • Volume Boosters • Adapted filters regulators with high airflow capacity

For more technical details, please refer to Product Specifications Sheets (PSS PO-998-EN) available on www.schneider-electric.com

(*) = coming soon

se.com

Life Is On

Schneider
Electric

Schneider Electric
20, rue de la Marne
68360 Soultz, H.Rhin
France