

FEATURES

- Valves do not require a minimum operating pressure and have a high operating pressure as indicated
- Valves operation is not affected by mounting position
- The solenoid valves satisfy all relevant EC directives

GENERAL

Differential pressure See «SPECIFICATIONS» [1 bar =100 kPa]
Maximum viscosity 65 cSt (mm²/s)
Response time 5 - 25 ms

| fluids (*) | temperature range (TS) | seal materials (*) |
|----------------------------|--------------------------------------|-------------------------------------|
| air, inert gas, water, oil | - 20°C to + 90°C - 20°C to + 40°C | NBR (nitrile) UR (cast urethane) |

MATERIALS IN CONTACT WITH FLUID

(*) Ensure that the compatibility of the fluids in contact with the materials is verified

| | Brass body | Stainless steel body |
|----------------------------------|-----------------|----------------------|
| Body | Brass | AISI 303 SS |
| Core tube | Stainless steel | Stainless steel |
| Core and plugnut | Stainless steel | Stainless steel |
| Springs | Stainless steel | Stainless steel |
| Seat | Brass | Stainless steel |
| Seals | NBR | NBR |
| Disc | NBR or UR | NBR or UR |
| Disc holder (NO function) | POM | POM |
| Shading coil | Copper | Silver |

ELECTRICAL CHARACTERISTICS

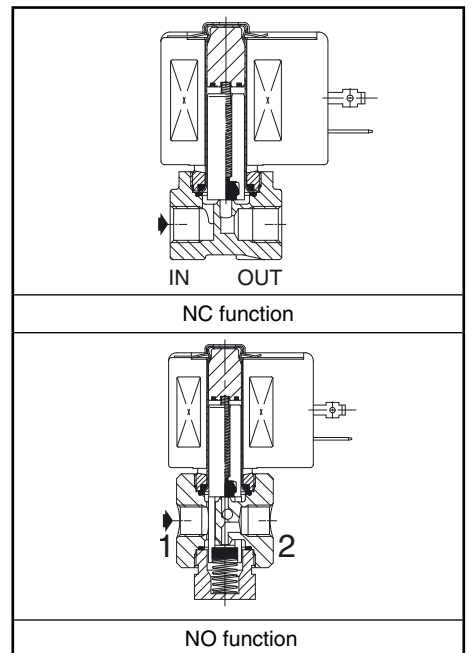
Coil insulation class F
Connector Spade plug (cable Ø 6-10 mm)
Connector specification ISO 4400 / EN 175301-803, form A
Electrical safety IEC 335
Electrical enclosure protection Moulded IP65 (EN 60529)
Standard voltages DC (=) : 24V - 48V
 (Other voltages and 60 Hz on request) AC (~) : 24V - 48V - 115V - 230V / 50 Hz

| prefix option | power ratings | | | operator ambient temperature range (TS) (C°) | replacement coil | | type (1) | |
|---------------|---------------|---------|-----|--|------------------|------------|------------|----|
| | inrush | holding | | | ~ | = | | |
| | ~ | (VA) | (W) | | ~ | = | | |
| SC | 34 | 15,6 | 6 | 7 / 9,7 | -20 to + 75 | 400325-117 | 400325-142 | 01 |
| | 30 | 22,5 | 9 | 9,5/15,3 | -20 to + 50 | 400325-217 | 400325-242 | |

(1) Refer to the dimensional drawings on the following page.

SPECIFICATIONS

| pipe size | orifice size | flow coefficient Kv | | operating pressure differential (bar) | | | | | | power coil (W) | | catalogue number | | options | | | | | | | |
|--|--------------|---------------------|-----|---------------------------------------|-----------|-----------|---------|----|----|----------------|---|------------------|------------|---------|-----------------|--------------------------|-----------------------|-----|------|----|------|
| | | | | min. | max. (PS) | | | ~ | = | | | | | brass | stainless steel | maintained man. operator | impulse man. operator | FPM | EPDM | CR | PTFE |
| | | | | | air (*) | water (*) | oil (*) | | | | | | | | | | | | | | |
| NC - Normally closed, NBR seals and disc | | | | | | | | | | | | | | | | | | | | | |
| G 1/8 | 1,2 | 0,05 | 0,8 | 0 | 50 | 45 | 50 | 45 | 35 | 35 | 6 | 9,7 | SCG262C001 | - | - | - | V | E | J | T | |
| NPT 1/8 | | | | | - | - | - | - | - | - | - | - | - | - | - | SCB262C012 | MO | - | - | V | E |
| G 1/8 | 2,4 | 0,17 | 2,8 | 0 | 20 | 10 | 20 | 10 | 10 | 9 | 6 | 9,7 | SCG262C014 | - | - | - | V | E | J | T | |
| NPT 1/8 | | | | | - | - | - | - | - | - | - | - | - | - | - | SCB262C015 | - | - | - | V | E |
| G 1/8 | 2,4 | 0,17 | 2,8 | 0 | 23 | 15 | 28 | 15 | 20 | 13 | 9 | 15,3 | SCG262C011 | - | - | - | V | E | J | T | |
| NPT 1/8 | | | | | - | - | - | - | - | - | - | - | - | - | - | SCG262C002 | - | MO | - | V | E |
| G 1/8 | 3,2 | 0,3 | 5 | 0 | 11 | 5 | 12 | 5 | 9 | 5 | 6 | 9,7 | - | - | MO | - | V | E | J | T | |
| NPT 1/8 | | | | | - | - | - | - | - | - | - | - | - | - | - | SCB262C006 | MO | - | V | E | J |
| G 1/8 | 3,2 | 0,3 | 5 | 0 | 15 | 8 | 14 | 8 | 12 | 7 | 9 | 15,3 | SCG262C016 | - | MO | - | V | E | J | T | |
| NPT 1/8 | | | | | - | - | - | - | - | - | - | - | - | - | - | - | SCB262C079 | - | - | - | - |
| NC - Normally closed, NBR seals and UR disc | | | | | | | | | | | | | | | | | | | | | |
| G 1/8 | 1,2 | 0,05 | 0,8 | 0 | 130 | - | 100 | - | 60 | - | 9 | - | SCG262C095 | - | - | - | - | - | - | T | |
| NPT 1/8 | | | | | - | - | - | - | - | - | - | - | - | - | - | - | - | - | - | - | - |
| NO - Normally open, NBR seals and disc | | | | | | | | | | | | | | | | | | | | | |
| Rp 1/8 | 1,6 | 0,08 | 1,3 | 0 | 35 | 27 | 20 | 17 | 15 | 10 | 6 | 9,7 | SCE262C091 | - | - | - | V | E | J | T | |
| NPT 1/8 | | | | | - | - | - | - | - | - | - | - | - | - | - | - | SCB262C092 | - | - | V | E |
| Rp 1/8 | 2,4 | 0,13 | 2,7 | 0 | 20 | 13 | 13 | 7 | 10 | 7 | 6 | 9,7 | SCE262C093 | - | - | - | V | E | J | T | |
| NPT 1/8 | | | | | - | - | - | - | - | - | - | - | - | - | - | - | SCB262C094 | - | - | V | E |
| Rp 1/8 | 3,2 | 0,18 | 3 | 0 | 8 | 5 | 7 | 4 | 6 | 3 | 6 | 9,7 | SCE262C031 | - | MO | V | E | J | T | | |
| NPT 1/8 | | | | | - | - | - | - | - | - | - | - | - | - | - | - | SCB262C035 | - | MO | V | E |



OPTIONS

- Valves can also be supplied with FPM (fluoroelastomer), EPDM (ethylene-propylene), CR (chloroprene) and PTFE seals and discs. Use the appropriate optional suffix letter for identification
- Waterproof enclosure with embedded screw terminal coil according to protection class IP67, CEE-10
- Explosionproof enclosures for use in zones 1/21-2/22, categories 2-3 to ATEX Directive 94/9/EC (see "Explosionproof solenoids" section)
- Electrical enclosures according to "NEMA" standards are available
- Compliance with "UL", "CSA" and other local approvals available on request
- Mounting brackets for brass body valves, suffix MB
- Other pipe connections are available on request
- Plug with visual indication and peak voltage suppression or with cable length of 2 m (see Solenoids, Coils & Accessories section)

INSTALLATION

- The solenoid valves can be mounted in any position without affecting operation
- Solenoid valves have 2 mounting holes in body
- Stainless steel valves are standard supplied with mounting brackets
- Pipe connection identifier is G = G (ISO 228/1), E = Rp (ISO 7/1) or B = NPT (ANSI 1.20.3)
- Installation/maintenance instructions are included with each valve

SPARE PARTS KIT & ACCESSORIES

| catalogue number | spare parts kit no. | | mounting bracket no. |
|------------------------|---------------------|---------|----------------------|
| | ~ | = | |
| SCG262C001 | C302006 | C302058 | 164706-001 |
| SCG262C002/011/014/016 | C302014 | C302058 | 164706-001 |
| SCG262C006/015 | C302016 | C302060 | 164706-001 |
| SCG262C012 | C302008 | C302060 | 164706-001 |
| SCG262C079 | C302012 | - | 164706-001 |
| SCG262C095 | C302010 | - | 164706-001 |
| SCE262C031 | C302012 | - | 164706-001 |
| SCE262C091 | C097847 | C100056 | 212299-001 |
| SCE262C093 | C097848 | C100056 | 212299-001 |
| SCB262C035 | C302043 | C302074 | 212299-001 |
| SCB262C092 | C302043 | C302074 | 212299-001 |
| SCB262C094 | C302043 | C302074 | 212299-001 |

(1) Standard prefixes/suffixes are also applicable to kits.
- Not available

ORDERING EXAMPLES:

| | | | | |
|----|---|-----|-------|-----------------|
| SC | G | 262 | C 001 | 230V / 50 Hz |
| SC | B | 262 | C 006 | MO 115V / 50 Hz |
| SC | G | 262 | C 002 | V 24V / DC |
| SC | E | 262 | C 091 | 230V / 50 Hz |

prefix pipe thread basic number voltage suffix

ORDERING EXAMPLES KITS:

| | |
|------------------------|---|
| C302006 ⁽¹⁾ | |
| C100056 | V |
| C097847 | E |

basic number suffix

DIMENSIONS (mm), WEIGHT (kg)

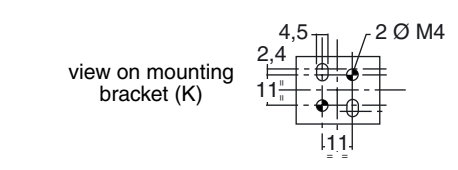
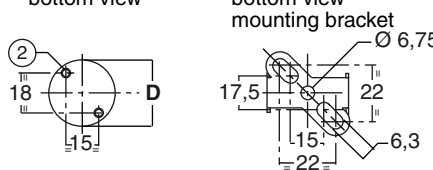
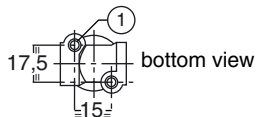
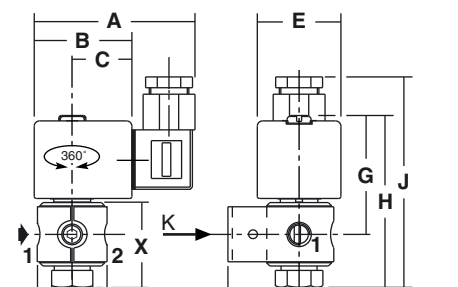
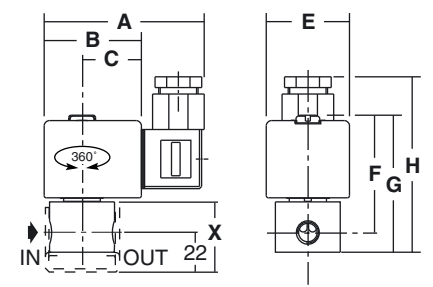
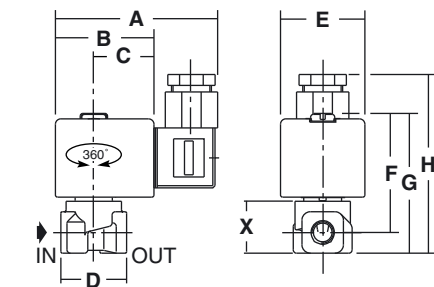


TYPE 01
Prefix "SC" Solenoid
Epoxy moulded
IEC 335 / ISO 4400
IP65

SCG262C001/002/011/014/016/095

SCB262C006/012/015/079

SCE262C091/093/031
SCB262C092/094/035



| type | prefix option | catalogue number | A | B | C | D | E | F | G | H | J | X | weight ⁽²⁾ |
|------|---------------|--------------------------------|----|----|----|----|----|----|----|----|----|----|-----------------------|
| 01 | SC | SCG262C001/002/011/014/016/095 | 75 | 45 | 27 | 30 | 39 | 56 | 64 | 81 | - | 25 | 0,4 |
| | | SCB262C006/012/015/079 | 75 | 45 | 27 | 30 | 39 | 56 | 64 | 80 | - | 36 | 0,4 |
| | | SCE262C091/093/031 | 75 | 45 | 27 | 30 | 39 | 33 | 57 | 79 | 95 | 40 | 0,45 |
| | | SCB262C092/094/035 | 75 | 45 | 27 | 30 | 39 | 33 | 57 | 79 | 95 | 40 | 0,45 |

2 mounting holes Ø M4:

① depth 6 mm

② depth 8 mm

[Mounting hole thread may differ if pipe connection is changed (NPT, ...).]

(2) Incl. coil(s) and connector(s).